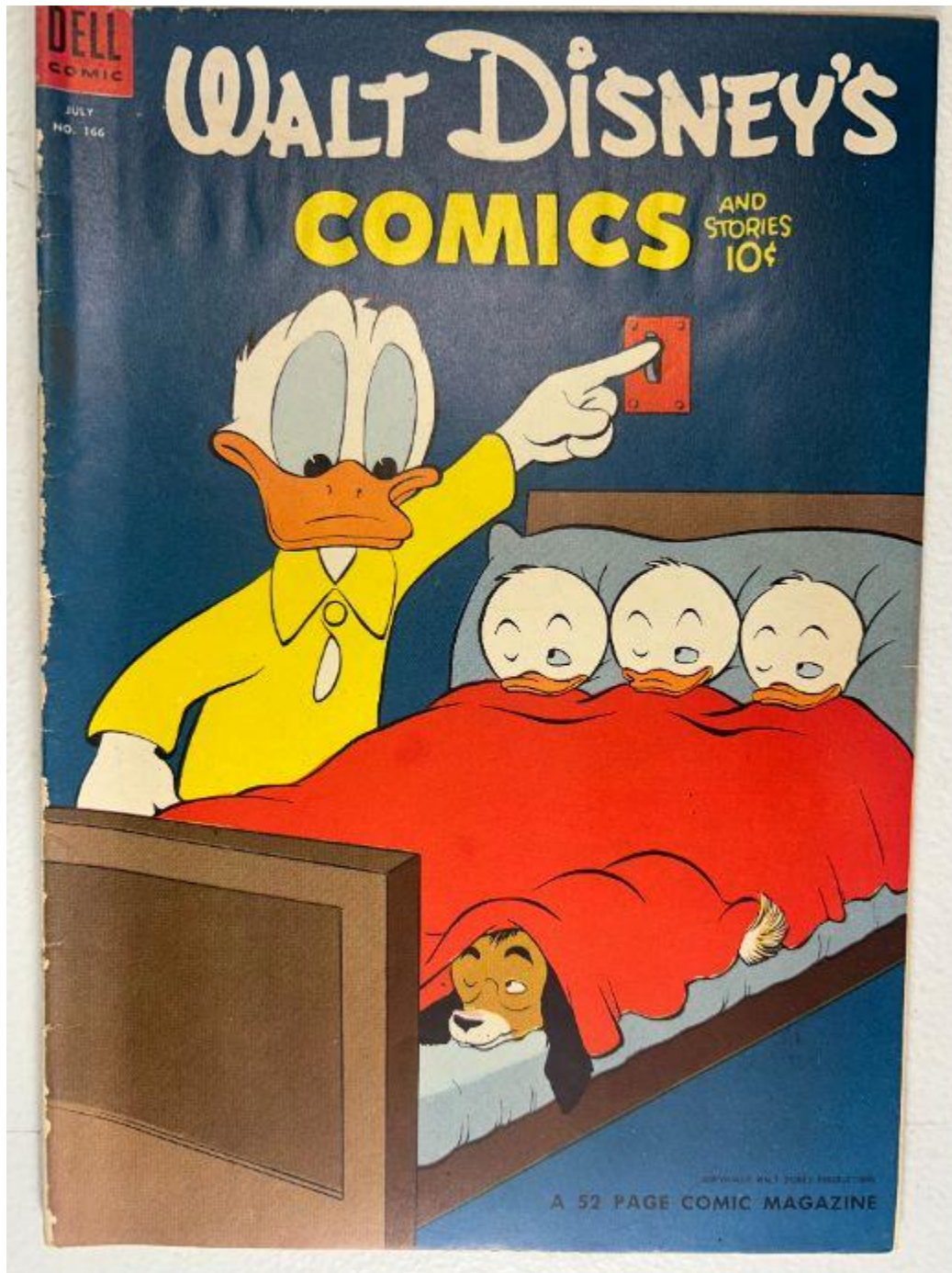


■ **Walt Disney's Comics and Stories – Vol. 14 No. 10
(July 1952)**

Evaluation Date: April 3, 2026



SUMMARY OF OBSERVATIONS

This comic retains the front cover, back cover, centerfold, and all photographed interior pages. Overall presentation is strong, with the front cover exhibiting vivid color saturation and noticeable retained surface gloss. Interior pages display clear printing and stable color, with age-consistent toning. The spine remains continuous and intact, showing a **slight roll localized toward the top portion**.

Condition issues are present but limited. The front cover shows **edge wear at the lower spine area with shallow material thinning**, consistent with handling rather than detached loss. Both staples are present and embedded, showing **surface oxidation** without clear rust migration into surrounding paper. The back cover and interior pages show **overall uniform toning**, which appears consistent with natural paper oxidation rather than localized staining. The brittleness test image shows a single page gently flexed, forming a smooth arc with no visible fiber fracture.

FRONT COVER — OBSERVATIONS

Walt Disney's Comics and Stories – Vol. 14 No. 10 (July 1952)

Photo Condition & Quality:

Image is sharp and evenly lit, showing the full cover with edges, corners, and spine visible. Resolution is sufficient to assess gloss, edge wear, and spine geometry.

Observations:

- Strong, even color saturation across the blue background and character artwork.
- Surface gloss is visible, particularly in less-handled areas.
- Along the **lower spine edge**, there is **edge wear with shallow material thinning**, exposing lighter underlying paper but without a detached void or missing section.
- The wear area measures approximately **10–14 mm vertically** and remains flush with surrounding cover stock, indicating abrasion rather than discrete paper loss.
- Fine vertical spine cracks are present, approximately **2–4 mm** in length.
- Corners show light rounding, approximately **3–5 mm** inward.
- No writing observed on the front cover.

Overall Impression:

The front cover remains visually strong, with **localized edge wear and light spine cracking**, but no confirmed detached paper loss.

BACK COVER — OBSERVATIONS

Walt Disney's Comics and Stories – Vol. 14 No. 10 (July 1952)

Photo Condition & Quality:

Image is clear and evenly lit, fully framed with edges and corners visible.

"SPARK UP... to pick-off a base-runner!"
says
ROY CAMPANELLA
BROOKLYN DODGER STAR CATCHER

DON'T WIND UP, ON A SNAP-
THROW I STEP
ONCE WHILE
I...

BRING THE
BALL BACK
PAST MY EAR...

... TURN MY SHOULDERS
AND...

LET IT GO WITH A SNAP!
GET PLENTY OF
SPARK
INTO IT!

START TRAINING RIGHT. GET LOTS OF
PRACTICE, SLEEP AND GOOD
FOOD. FOR ENERGY I SPARK
UP WITH WHEATIES!

GOT HIM! THAT
WHEATIES SPARK
SURE HELPS.

There's a whole kernel of
wheat in every Wheaties flake

- WHOLE WHEAT HELPS YOU GROW!
- WHOLE WHEAT HELPS YOU BUILD STRONG MUSCLES!
- WHOLE WHEAT FOR A FEELING OF WELL BEING!

**SPARK UP
WITH WHEATIES!**
"Breakfast of Champions"

Wheaties and "Breakfast of Champions" are registered
with quality of General Mills

Cut this photo out, look for different champion pictures in other Doll Cases.

Roy Campanella



Observations:

- Interior pages exhibit **tan to light-tan paper coloration**.
- Page color is consistent across photographed pages, without abrupt color changes or isolated dark zones.
- Some pages show slightly deeper toning near outer margins, but transitions are **gradual**, not abrupt.
- This pattern is consistent with **normal oxidation and exposure**, not liquid staining.
- Artwork remains clear with strong color and crisp linework.
- No interior tears, chips, or paper loss observed.
- Minor corner bends visible on some pages, approximately **2–4 mm** inward.
- No interior writing observed.

Overall Impression:

Interior page discoloration is consistent with **uniform age toning**, not abnormal staining.

CENTERFOLD — OBSERVATIONS

Walt Disney's Comics and Stories – Vol. 14 No. 10 (July 1952)

Photo Condition & Quality:

Image is in focus and evenly lit, clearly showing both pages and the central gutter.



Observations:

- Both staple positions visible.
- Surrounding paper shows light compression only.
- No tearing, separation, or paper loss visible.
- Centerfold remains fully attached.

Overall Impression:

The centerfold is **securely attached and structurally sound**.

SPINE — OBSERVATIONS

Walt Disney's Comics and Stories – Vol. 14 No. 10 (July 1952)

Photo Condition & Quality:

Image is sharp and well lit, showing the full spine length.

**Observations:**

- Spine remains continuous and intact.
- A **slight roll is visible toward the top portion of the spine**, tapering out toward the middle.
- Fine vertical cracking present, approximately **2–4 mm** in length.
- No long splits or exposed interior page layers observed.

Overall Impression:

The spine is structurally intact with **minor roll and light cracking**.

UPPER STAPLE — OBSERVATIONS

Walt Disney's Comics and Stories – Vol. 14 No. 10 (July 1952)

Photo Condition & Quality:

Macro image is sharp and evenly lit.



Observations:

- Metal staple present and embedded.
- **Surface oxidation** visible as darkened metal coloration.
- No visible rust migration into surrounding paper.
- Surrounding paper remains intact with no tearing or slot enlargement.

Overall Impression:

Upper staple shows **surface-level oxidation only**.

LOWER STAPLE — OBSERVATIONS

Walt Disney's Comics and Stories – Vol. 14 No. 10 (July 1952)

Photo Condition & Quality:

Macro image is clear and properly framed.



Observations:

- Metal staple present and embedded.
- Oxidation comparable to the upper staple.
- Surrounding paper remains intact with no visible deterioration.

Overall Impression:

Lower staple shows **surface-level oxidation only**.

BRITTLENESS TEST — OBSERVATIONS

Walt Disney's Comics and Stories – Vol. 14 No. 10 (July 1952)

Photo Condition & Quality:

Image shows a single interior page lifted above flat underlying pages.



Observations (confined to the lifted page):

- Page bends in a **smooth, shallow arc**.
- No visible fiber fracture, splitting, or flaking along the bend line.
- Paper surface remains continuous at the point of flex.

Overall Impression:

The tested page demonstrates **retained flexibility** and does **not exhibit brittle behavior**.